

TECHNICAL MANUAL

ORGANIZATIONAL, DIRECT SUPPORT AND GENERAL SUPPORT

MAINTENANCE REPAIR PARTS AND SPECIAL TOOLS LISTS

(INCLUDING DEPOT MAINTENANCE REPAIR PARTS AND SPECIAL TOOLS)

FOR

BATTERY CHARGER-ANALYZER AN/USM-432

(NSN 6130-01-055-1574)

HEADQUARTERS, DEPARTMENT OF THE ARMY

6 NOVEMBER 1980

TECHNICAL MANUAL }
 No. 11-6130-413-24P }

HEADQUARTERS
 DEPARTMENT OF THE ARMY
 WASHINGTON, DC, 6 November 1980

**ORGANIZATIONAL, DIRECT SUPPORT AND GENERAL SUPPORT
 MAINTENANCE REPAIR PARTS AND SPECIAL TOOLS LISTS
 (INCLUDING DEPOT MAINTENANCE REPAIR PARTS AND SPECIAL TOOLS)
 FOR
 BATTERY CHARGER-ANALYZER AN/USM-432
 (NSN 6130-01-055-1574)
 Current au of 16 June 1980**

REPORTING ERRORS AND RECOMMENDED IMPROVEMENTS

You can help improve this manual. If you find any mistakes or if you know of a way to improve the procedures, please let us know. Mail your letter, DA Form 2028 (Recommended Changes to Publications and Blank Forms), or DA Form 2028-2 located in back of this manual direct to Commander, US Army Communications and Electronics Materiel Readiness Command, ATTN: DRSEL-ME-MQ, Fort Monmouth, NJ 07703
In either case, a reply will be furnished direct to YOU.

Table of Contents

	Page	illus Figure
SECTION I. Introduction -----	1	
II. Repair Parts List -----	5	
GROUP 00 Battery Charger-Analyzer AN/USM-432 -----	6	1
01 Control Board Assembly -----	11	2
SECTION III. Special Tools List (Nonapplicable)		
IV. National Stock Number and Part Number Index -----	13	

SECTION I INTRODUCTION

1. Scope

This manual lists spares and repair parts; special tools; special test, measurement, and diagnostic equipment (TMDE), and other special support equipment required for performance of organizational, direct support and general support maintenance of the AN/USM-432. It authorizes the requisitioning and issue of spares and repair parts as indicated by the source and maintenance codes.

2. General

This Repair Parts and Special Tools List is divided into the following sections:

a. *Section II. Repair Parts List.* A list of spares and repair parts authorized for use in the performance of maintenance. The list also includes parts which must be removed for replacement of the authorized parts. Parts lists are composed of functional groups in numeric sequence, with the parts in each group listed in figure and item number sequence.

b. *Section III. Special Tools List.* Not applicable.

c. *Section IV. National Stock Number and Part Number Index.* A list in National item identification number (NIIN) sequence of all National stock numbers (NSN) appearing in the listings, followed by a list, in alphameric sequence, of all part numbers appearing in the listings. National stock numbers and part numbers are cross-referenced to each illustration figure and item number appearance.

3. Explanation of Columns

a. *Illustration.* This column is divided as follows:

(1) *Figure number.* Indicates the figure number of the illustration on which the item is shown.

(2) *Item number.* The number used to identify item called out in the illustration.

b. *Source, Maintenance, and Recoverability {SMR} Codes.*

(1) *Source code.* Source codes indicate the manner of acquiring support items for maintenance, repair, or overhaul of end items. Source codes are entered in the first and second positions of the Uniform SMR Code format as follows:

Code	Definition
PA -	Item procured and stocked for anticipated or known usage.
XD -	A support item that is not stocked. When required, item will be procured through normal supply channels.

NOTE

Cannibalization or salvage may be used as a source of supply for any items source coded above except those coded XA and aircraft support items as restricted by AR 700-42.

(2) *Maintenance code.* Maintenance codes are assigned to indicate the levels of maintenance authorized to USE and REPAIR support items. The maintenance codes are entered in the third and fourth positions of the Uniform SMR Code format as follows:

(a) The maintenance code entered in the third position will indicate the lowest maintenance level authorized to remove, replace, and use the support item. The maintenance code entered in the fourth position will indicate one of the following levels of maintenance:

Application/Explanation

- O - Support item is removed, replaced, used at the organizational level.
- H - Support item is removed, replaced, used at the general support level.
- D - Support items that are removed, replaced, used at depot, mobile depot, specialized repair activity only.

(b) The maintenance code entered in the fourth position indicates whether the item is to be repaired and identifies the lowest maintenance level with the capability to perform complete repair (i.e., all authorized maintenance functions). This position will contain one of the following maintenance codes:

Code	Application/Explanation
O	The lowest maintenance level capable of complete repair of the support item is the organizational level.
D	The lowest maintenance level capable of complete repair of the support item is the depot level.
Z	Nonreparable. No repair is authorized.

(3) Recoverability code. Recoverability codes are assigned to support items to indicate the disposition action on unserviceable items. The recoverability code is entered in the fifth position of the Uniform SMR Code format as follows:

Recoverability codes	Definition
Z	Nonreparable item. When unserviceable, condemn and dispose at the level indicated in position 3.
O	Reparable item. When uneconomically repairable, condemn and dispose at organizational level.
D	Reparable item. When beyond lower level repair capability, return to depot. Condemnation and disposal not authorized below depot level.

c. *National Stock Number*. Indicates the National stock number assigned to the item and will be used for requisitioning purposes.

d. *Part Number*. Indicates the primary number used by the manufacturer (individual, company, firm, corporation, or Government activity), which controls the design and characteristics of the item by means of its engineering drawings, specifications, standards, and inspection requirements to identify an item or range of items.

NOTE

When a stock numbered item is requisitioned, the repair part received may have a different part number than the part being replaced.

e. *Federal Supply Code for Manufacturer (FSCM)*. The FSCM is a 5-digit numeric code listed in SB 708-42 which is used to identify the manufacturer, distributor, or Government agency, etc.

f. *Description*. Indicates the Federal item name and, if required, a minimum description to identify the item.

g. *Unit of Measure (U/M)*. Indicates the standard of the basic quantity of the listed item as used in performing the actual maintenance function. This measure is expressed by a two-character alphabetical abbreviation (e.g., ea, in, pr, etc).

When the unit of measure differs from the unit of issue, the lowest unit of issue that will satisfy the required units of measure will be requisitioned.

h. *Quantity Incorporated in Unit*. Indicates the quantity of the item used in the breakout shown on the illustration figure, which is prepared for a functional group, subfunctional group, or an assembly.

4. Special Information

a. The following publications pertain to the AN/USMA32 and its component:

TM 11-6130413-12, Battery Charger-Analyzer AN/USM-432.

b. National stock numbers (NSN's) that are missing from P source coded items have been applied for and will be added to this TM by future change/revision when they are entered in the Army Master Data File (AMDF). Until the NSN's are established and published, submit exception requisitions to: Commander, US Army Communications and Electronics Materiel Readiness Command, ATTN: DRSEL-MM, Fort Monmouth, NJ 07703 for the part required to support your equipment.

5. How to locate Repair Parts

a. When National stock number or part number is unknown.

(1) *First*. Using the table of contents, determine the functional group within which the item belongs. This is necessary since illustrations are prepared for functional groups and listings are divided into the same groups.

(2) *Second*. Find the illustration covering the functional group to which the item belongs.

(3) *Third*. Identify the item on the illustration and note the illustration figure and item number of the item.

(4) *Fourth*. Using the Repair Parts Listing, find the figure and item number noted on the illustration.

b. When National stock number or part number is known.

(1) *First*. Using the Index of National Stock Numbers and Part Numbers, find the pertinent

National stock number or part number. This index is in NHN sequence followed by a list of part numbers in alphameric sequence, cross-referenced to the illustration figure number and item number.

(2) *Second.* After finding the figure and item

number, locate the figure and item number in the repair parts list.

6. Abbreviations

Not applicable.

(Next printed page is 4)

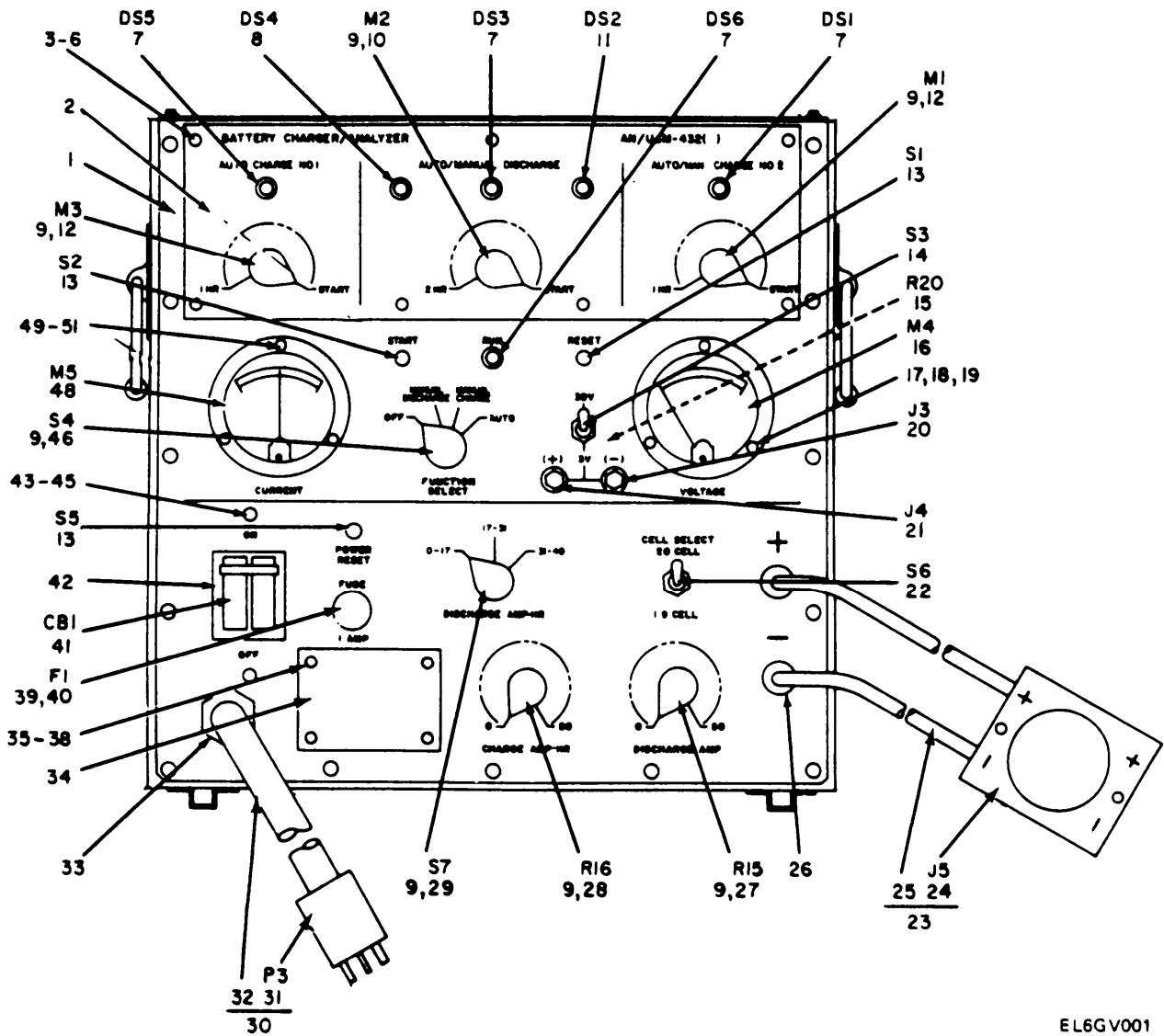
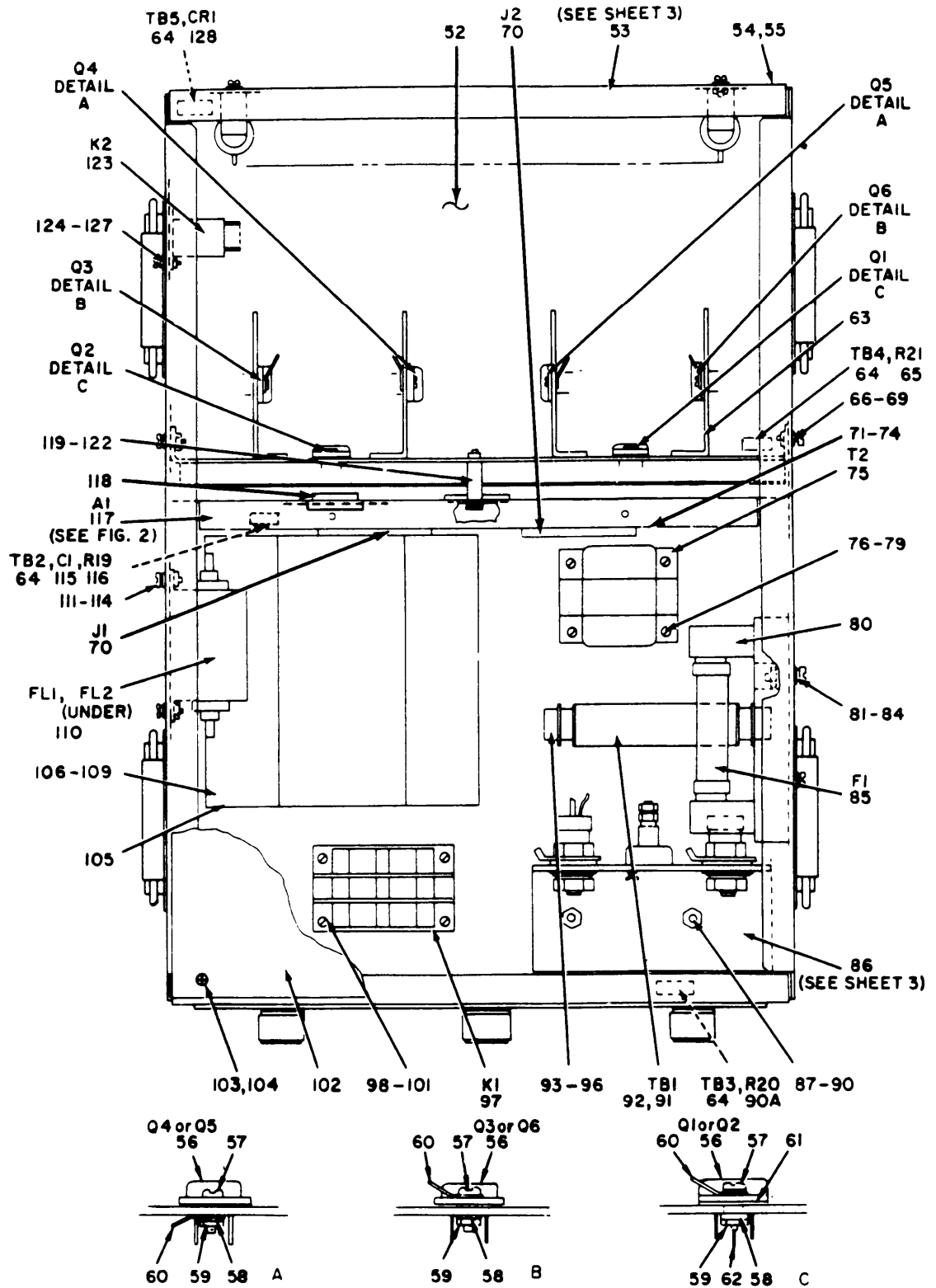


Figure 1. Battery Chager-Analyzer AN/USM-432 (Sheet 1 of 3).



EL6GV002

Figure 1. Battery Charger-Analyzer AN/USM-432 (sheet 2 of 3).

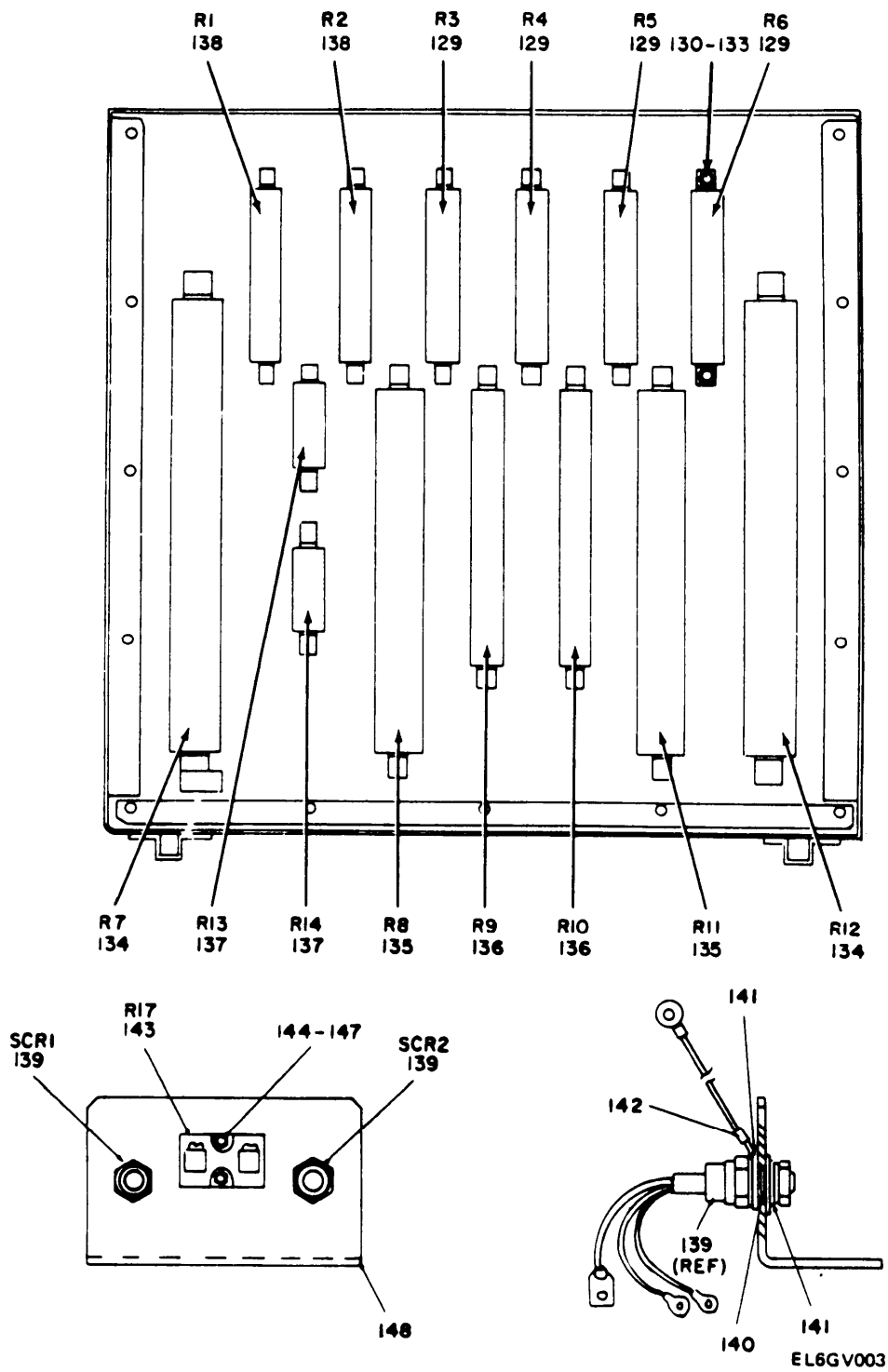


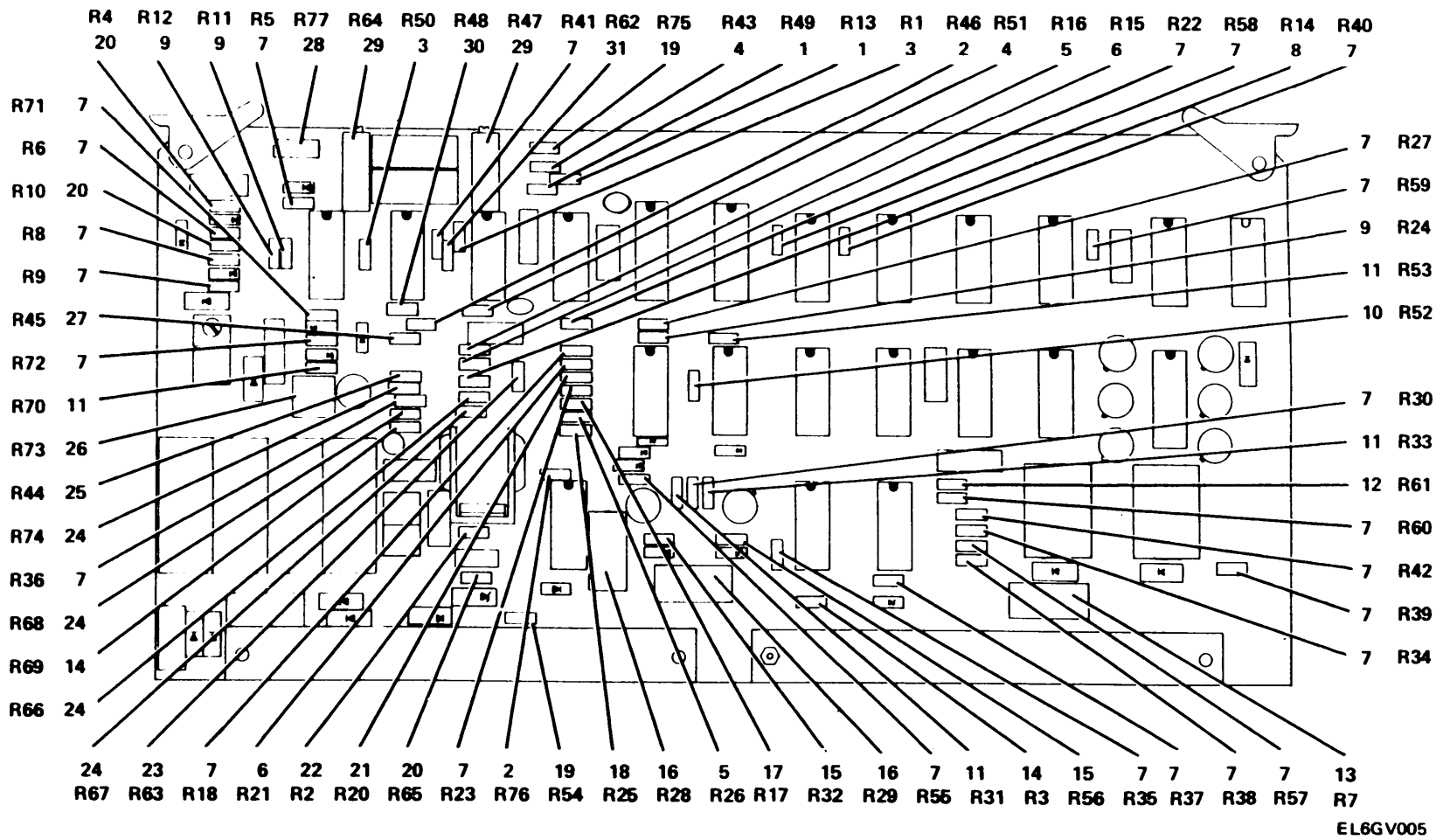
Figure 1. Battery Charger-Analyzer AN/USM-432 (sheet 3 of 3).

SECTION II (1) ILLUSTRATION (A) (B) FIG ITEM NO NO		(2) SMR CODE	(3) NATIONAL STOCK NUMBER	(4) PART NUMBER	(5) FSCM	TM11-6130-413-24P (6) DESCRIPTION	USABLE ON CODE	(7) U/M	(8) QTY INC IN UNIT
GROUP 00 BATTERY CHARGER-ANALYZER AN/USM-432									
1	1	XDDDZ		200340	55364	FRONT PANEL ASSY		EA	1
1	2	XDDDZ		200415	55364	PLATE, LEGEND, REVERS		EA	1
1	3	XDHZZ		MS5195729	96906	SCREW, MACHINE		EA	7
1	4	XDHZZ	5310-00-773-7624	NAS620C6	80205	WASHER, FLAT		EA	7
1	5	XDHZZ		MS35338136	96906	WASHER, LOCK		EA	7
1	6	XDHZZ		MS35649264	96906	NUT, PLAIN, HEXAGON		EA	7
1	7	PAHZZ		24980713333504	72619	LIGHT, INDICATOR		EA	4
1	8	PAHZZ		249787133331504	72619	LIGHT, INDICATOR		EA	1
1	9	PADZZ	5355-00-579-6819	90-5-2	49956	KNOB		EA	7
1	10	PAHZZ	6645-01-082-4866	200406	55364	TIMER, INTERVAL		EA	1
1	11	PAHZZ		24979713332504	72619	LIGHT, INDICATOR		EA	1
1	12	PAHZZ	6645-01-080-6052	200405	55364	TIMER, INTERVAL		EA	2
1	13	PAHZZ		PB126-RED KNOB	31356	SWITCH, PUSH		EA	3
1	14	PAHZZ	5930-00-430-3218	7592K6	27191	SWITCH, TOGGLE		EA	1
1	15	PAHZZ		RN55029441F	81349	RESISTOR, FIXED, FILM		EA	1
1	16	PAHZZ	6625-01-078-1785	200404	55364	VOLTMETER		EA	1
1	17	XDHZZ		MS5195732	96906	SCREW, MACHINE		EA	3
1	18	XDHZZ		MS35338136	96906	WASHER, LOCK		EA	3
1	19	XDHZZ		MS35649264	96906	NUT, PLAIN, HEXAGON		EA	3
1	20	PAHZZ	5940-00-269-2219	257-BLACK	83330	POST, BINDING, ELECTR		EA	1
1	21	PAHZZ	5940-00-356-2493	257-RED	83330	POST, BINDING, ELECTR		EA	1
1	22	PAHZZ	5930-00-844-0136	7580K6	27191	SWITCH, TOGGLE		EA	1
1	23	XOOOOO		200413	55364	CABLE ASSY, BATT		EA	1
1	24	PAOZZ	5935-00-686-0447	MS25182-2	96906	CONNECTOR, REC, ELEC		EA	1
1	25	PADZZ		NO. 4	81774	WIRE, ELEC		FT	7
1	26	PAOZZ		1237	28520	BUSHING STRAIN RELI		EA	2
1	27	PAHZZ	5905-01-084-5938	200427	55364	RESISTOR, VARIABLE, W		EA	1
1	28	PAHZZ		200410	55364	RESISTOR, VARIABLE W		EA	1
1	29	PAHZZ	5930-01-080-3631	200407	55364	SWITCH, ROTARY		EA	1
1	30	XOOOO		200411	55364	CABLE ASSY, AC POWER		EA	1
1	31	PAOZZ	5935-01-084-1936	L1430P	81091	CONNECTOR, PLUG, ELEC		EA	1
1	32	PAOZZ		10/4, TYPE SO	81774	WIRE, ELECTRICAL		FT	7
1	33	PAOZZ		8107775	72971	BUSHING STRAIN RELI		EA	1
1	34	XDOOZ		200414	55364	PLATE, IDENT		EA	1
1	35	XDHZZ		MS5195715	96906	SCREW, MACHINE		EA	4
1	36	XDHZZ	5310-00-057-0573	NAS620C4	80205	WASHER, FLAT		EA	4
1	37	XDHZZ		MS35338135	96906	WASHER, LOCK		EA	4
1	38	XDHZZ		MS35649244	96906	NUT, PLAIN HEXAGON		EA	4
1	39	PAOZZ	5920-00-892-9311	HKP	71400	FUSEHOLDER, EXTRACTO		EA	1

SECTION II		TM11-6130-413-24P						
(1)	(2)	(3)	(4)	(5)	(6)	(7)	(8)	
ILLUSTRATION								
(A)	(B)	NATIONAL	PART	FSCM	DESCRIPTION	USABLE ON CODE	U/M	
FIG	ITEM	STOCK	NUMBER					
NO	NO	NUMBER	NUMBER				INC	
							IN	
							UNIT	
1	40	5920-00-280-8342	AGC1	44038	FUSE, 1A		EA 1	
1	41		EQ8BQ2830	02288	CIRCUIT BREAKER		EA 1	
1	42		FP9555	33097	FACE MOUNTING PLATE		EA 1	
1	43		MS5195745	96906	SCREW, MACHINE		EA 2	
1	44	5310-00-069-5291	NAS620C8	80205	WASHER, FLAT		EA 2	
1	45		MS35338137	96906	WASHER, LOCK		EA 2	
1	46		200426	55364	SWITCH, ROTARY		EA 1	
1	48	6625-01-079-3395	200403	55364	AMMETER		EA 1	
1	49		MS5135732	96906	SCREW, MACHINE		EA 3	
1	50		MS35338136	96906	WASHER, LOCK		EA 3	
1	51		MS35649264	96906	NUT, PLAIN HEXAGON		EA 3	
1	52		200341	55364	CHASSIS ASSEMBLY		EA 1	
1	53		200343	55364	REAR CVR/LO RES RAN		EA 1	
1	54		2L029	EMPRE	SCREW, MACHINE		EA 13	
1	55	5310-00-069-5291	NAS620C8	80205	WASHER, FLAT		EA 13	
1	56	5961-00-518-7344	NJ802	04713	TRANSISTOR		EA 6	
1	57		MS5195730	96906	SCREW, MACHINE		EA 12	
1	58		VK160 4 OHMS	12697	RESISTOR, FIXED		EA 2	
1	59		MS35649264	96906	NUT, PLAIN, HEXAGON		EA 12	
1	60		A7149856P7	41326	TERMINAL, LUG		EA 6	
1	61		N401P15C	41326	WASHER, INSULATOR		EA 2	
1	62		PT11	31223	TRANSISTOR		EA 2	
1	63		200345	55364	HEAT SINK		EA 1	
1	64	5940-00-681-9930	53E	71785	TERMINAL BOARD		EA 4	
1	65		RC07GF010J	81349	RESISTOR, FIXED, COMP		EA 1	
1	66		MS5195746	96906	SCREW, MACHINE		EA 6	
1	67	5310-00-069-5291	NAS620C8	80205	WASHER, FLAT		EA 6	
1	68		MS35338137	96906	WASHER, LOCK		EA 6	
1	69		MS35649284	96906	NUT, PLAIN HEXAGON		EA 6	
1	70		14302201	74868	CONNECTOR, ELECTRICA		EA 2	
1	71		MS5195718	96906	SCREW, MACHINE		EA 4	
1	72	5310-00-057-0573	NAS620C4	80205	WASHER, FLAT		EA 4	
1	73		MS35338135	96906	WASHER, LOCK		EA 4	
1	74		MS35649244	96906	NUT, PLAIN, HEXAGON		EA 4	
1	75		200112	55364	TRANSFORMER, POWER, S		EA 1	
1	76		MS5195745	96906	SCREW, MACHINE		EA 4	
1	77	5310-00-069-5291	NAS620C8	80205	WASHER, FLAT		EA 4	
1	78		MS35338137	96906	WASHER, LOCK		EA 4	
1	79		MS35649284	96906	NUT, PLAIN, HEXAGON		EA 4	
1	80		GE84147	41326	FUSEBLOCK		EA 1	

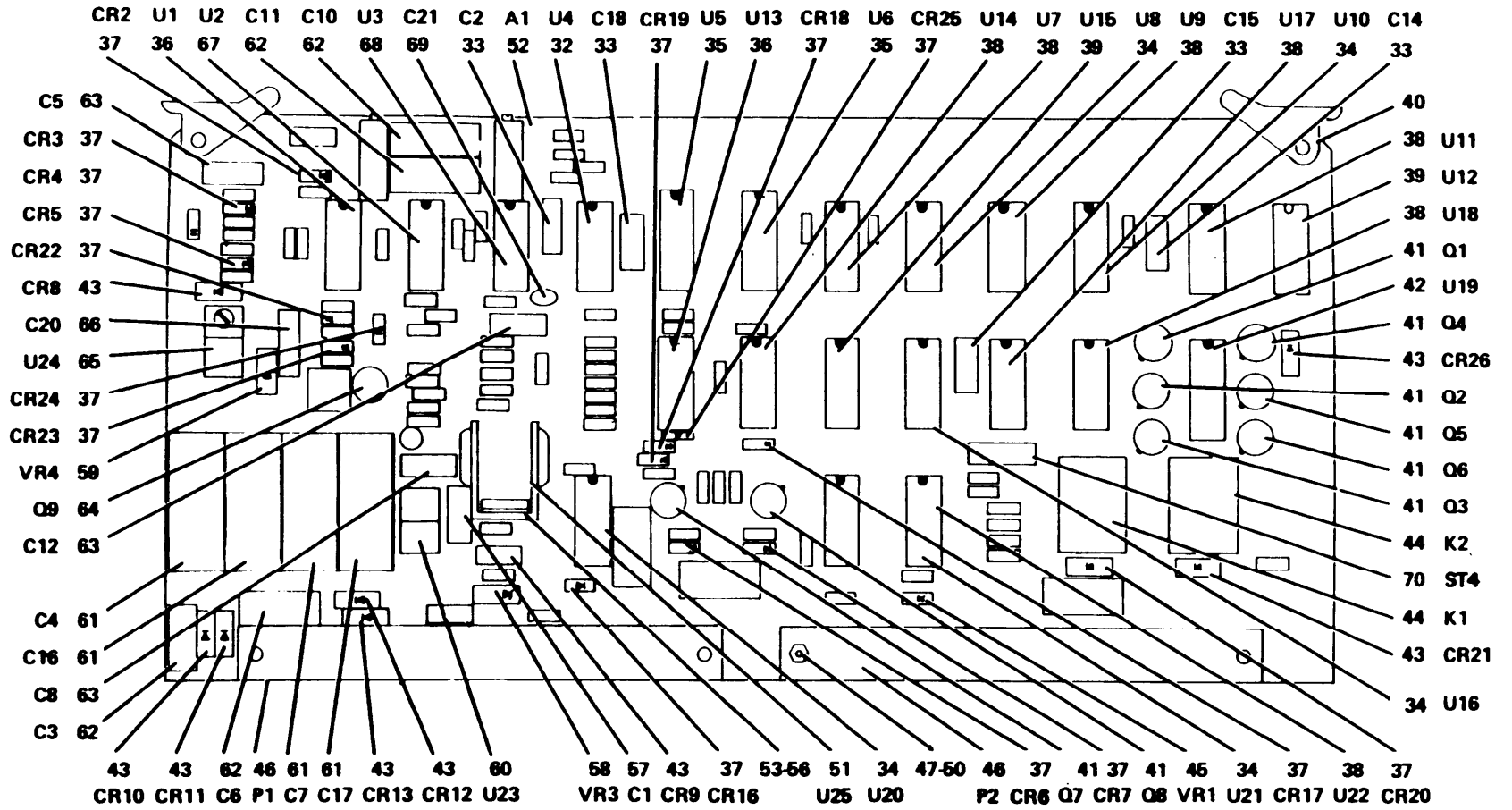
SECTION II		TM11-6130-413-24P						
(1)	(2)	(3)	(4)	(5)	(6)	(7)	(8)	
ILLUSTRATION								
(A)	(B)	NATIONAL	PART		DESCRIPTION	USABLE ON CODE	U/M	
FIG	ITEM	STOCK	NUMBER	FSCM				
NO	NO	NUMBER					INC	
							IN	
							UNIT	
1	81		MS5195868	96906	SCREW, MACHINE		EA 2	
1	82	5310-00-989-0640	NAS620C10	80205	WASHER, FLAT		EA 2	
1	83		MS35338138	96906	WASHER, LOCK		EA 2	
1	84		MS35650304	96906	NUT, PLAIN, HEXAGON		EA 2	
1	85	5920-00-281-0162	F19B250V100A	81349	FUSE100A		EA 1	
1	86		200416	55364	BRACKET, SCR/SHUNT		EA 1	
1	87		MS5195746	96906	SCREW, MACHINE		EA 2	
1	88	5310-00-069-5291	NAS620C8	80205	WASHER, FLAT		EA 2	
1	89		MS35338139	96906	WASHER, LOCK		EA 2	
1	90		MS35649284	96906	NUT, PLAIN HEXAGON		EA 2	
1	90A	5905-00-733-1381	RN55D3012F	81349	RESISTOR, FIXED, FILM		EA 1	
1	91		12141	71785	TERMINAL STRIP BAR		EA 1	
1	92		MS12141	71785	MARKER STRIP		EA 1	
1	93		MS5195732	96906	SCREW, MACHINE		EA 4	
1	94	5310-00-773-7624	NAS620C6	80205	WASHER, FLAT		EA 4	
1	95		MS35338136	96906	WASHER, LOCK		EA 4	
1	96		MS35649264	96906	NUT, PLAIN HEXAGON		EA 4	
1	97		ACC320U30	04009	RELAY, CONTACTOR		EA 1	
1	98		MS5195745	96906	SCREW, MACHINE		EA 4	
1	99	5310-00-069-5291	NAS620C8	80205	WASHER, FLAT		EA 4	
1	100		MS35338137	96906	WASHER FLAT		EA 4	
1	101		MS35649284	96906	NUT, PLAIN HEXAGON		EA 4	
1	102		200342	55364	COVER, UPPER		EA 1	
1	103		COML	EMPRE	SCREW, ST, HEX HD		EA 15	
1	104	5310-00-069-5291	NAS620C8	80205	WASHER, FLAT		EA 15	
1	105	5950-01-078-7929	200323	55364	TRANSFORMER		EA 1	
1	106		MS35307305	96906	SCREW, MACHINE		EA 4	
1	107	5310-00-057-0573	NAS620C4	80205	WASHER, FLAT		EA 4	
1	108		MS35338135	96906	WASHER, LOCK		EA 4	
1	109		COML	EMPRE	NUT, PLAIN HEXAGON		EA 4	
1	110	5915-01-082-7209	200402	55364	FILTER, BAND SUPPRES		EA 2	
1	111		MS5195745	96906	SCREW, MACHINE		EA 4	
1	112	5310-00-069-5291	NAS620C8	80205	WASHER, FLAT		EA 4	
1	113		MS35338138	96906	WASHER, LOCK		EA 4	
1	114		MS35649284	96906	NUT, PLAIN HEXAGON		EA 4	
1	115		T310B225M035AS	56289	CAPACITOR, FIXED, PLA		EA 1	
1	116	5905-00-683-2238	RC07GF103J	81349	RESISTOR, FIXED, COMP		EA 1	
1	117	6130-01-078-1850	200408	55364	CIRCUIT CARD ASSEMB		EA 1	
1	118		2300	28520	BUSHING, FEED/THRU		EA 2	
1	119		8507	28520	SPACER		EA 1	

SECTION II		TM11-6130-413-24P						
(1)	(2)	(3)	(4)	(5)	(6)	(7)	(8)	
ILLUSTRATION					DESCRIPTION	USABLE ON CODE	QTY INC IN UNIT	
(A)	(B)	NATIONAL STOCK NUMBER	PART NUMBER	FSCM		U/M		
FIG NO	ITEM NO	SMR CODE						
1	120	XDHZZ		MS5195736	96906	SCREW, MACHINE	EA 1	
1	121	XDHZZ	5310-00-773-7624	NAS620C6	80205	WASHER, FLAT	EA 1	
1	22	XDHZZ		MS35338136	96906	WASHER, LOCK	EA 1	
1	123	PAHZZ		200636	55364	RELAY	EA 1	
1	124	XDHZZ		MS5195729	96906	SCREW, MACHINE	EA 2	
1	125	XDHZZ	5310-00-773-7624	NAS620C6	80205	WASHER, FLAT	EA 2	
1	126	XDHZZ		MS35338156	96906	WASHER, LOCK	EA 2	
1	127	XDHZZ		MS35649264	96906	NUT, PLAIN HEXAGON	EA 2	
1	128	PAHZZ		1N4007	81349	SEMICONDUCTOR DEVIC	EA 1	
1	129	PAHZZ		VP50K1.3 OHMS	12697	RESISTOR, FIXED, WIRE	EA 4	
1	130	XDHZZ		MS5195729	96906	SCREW, MACHINE	EA 28	
1	131	XDHZZ	5310-00-773-7624	NAS620C6	80205	WASHER, FLAT	EA 28	
1	32	XDHZZ		MS35338136	96906	WASHER, LOCK	EA 28	
1	133	XDHZZ		MS35649264	96906	NUT, PLAIN HEXAGON	EA 28	
1	134	PAHZZ		VK200W 3 OHMS	12697	RESISTOR, FIXED, WIRE	EA 2	
1	135	XDHZZ		MS35338136	96906	WASHER, LOCK	EA 12	
1	136	PAHZZ		VK100N1 OHM	12697	RESISTOR, FIXED	EA 2	
1	137	PAHZZ		VP25K10 OHMS	12631	RESISTOR, FIXED	EA 2	
1	138	PAHZZ		VP50K 15 OHMS	12697	RESISTOR, FIXED	EA 2	
1	135	XDHZZ		MS35338136	96906	WASHER, LOCK	EA 12	
1	136	PAHZZ		VK100N1 OHM	12697	RESISTOR, FIXED	EA 2	
1	137	PAHZZ		VP25K10 OHMS	12631	RESISTOR, FIXED	EA 2	
1	138	PAHZZ		VP50K 15 OHMS	12697	RESISTOR, FIXED	EA 2	
1	139	XDHZZ	5961-00-990-2263	2N1912	03508	SEMICONDUCTOR DEVIC	EA 2	
1	140	XDHZZ		200394	55364	SPACER, RING	EA 2	
1	141	PAHZZ		430303	54355	WASHER, INSULATOR	EA 4	
1	142	PAHZZ		A7149855P7	03508	TERMINAL, LUG	EA 2	
1	143	PAHZZ		MSA101100A50	99246	SHUNT, INSTRUMENT	EA 1	
1	144	XDHZZ		MS5195747	96906	SCREW, MACHINE	EA 2	
1	145	XDHZZ	5310-00-069-5291	NAS620C8	80205	WASHER, FLAT	EA 2	
1	146	XDHZZ		MS35338137	96906	WASHER, LOCK	EA 2	
1	147	XDHZZ		MS35649284	96906	NUT, PLAIN HEXAGON	EA 2	
1	148	XDHZZ		200346	55364	BRACKET	EA 1	



TM 11-6130-413-24P

Figure 2. Control board assembly (sheet 1 of 2).



EL6GV004

Figure 2. Control board assembly (sheet 2 of 2).

SECTION II (1) ILLUSTRATION (A) (B) FIG ITEM NO NO		(2) SMR CODE	(3) NATIONAL STOCK NUMBER	(4) PART NUMBER	(5) FSCM	TM11-6130-413-24P (6) DESCRIPTION	(7) USABLE ON CODE U/M	(8) QTY INC IN UNIT
GROUP 01 CONTROL BOARD ASSEMBLY								
2	1	PADZZ	5905-00-683-7721	RC07GF101J	81349	RESISTOR, FIXED, COMP	EA	1
2	2	PADZZ	5905-00-691-0195	RC07GF562J	81349	RESISTOR, FIXED, COMP	EA	2
2	3	PADZZ	5905-00-686-3370	RC07GF202J	81349	RESISTOR, FIXED, COMP	EA	3
2	4	PADZZ	5905-00-681-8818	RC07GF153J	81349	RESISTOR, FIXED, COMP	EA	2
2	5	PADZZ		RN550252F	81349	RESISTOR, FIXED, FILM	EA	2
2	6	PADZZ	5905-00-786-3721	RN55D9531F	81349	RESISTOR, FIXED, FILM	EA	2
2	7	PADZZ	5905-00-683-2238	RC07GF103J	81349	RESISTOR, FIXED, COMP	EA	26
2	8	PADZZ	5905-00-727-8001	RC07GF681J	81349	RESISTOR, FIXED, COMP	EA	1
2	9	PADZZ	5905-00-681-8957	RC07GF474J	81349	RESISTOR, FIXED, COMP	EA	3
2	10	PADZZ	5905-00-681-8817	RC07GF105J	81349	RESISTOR, FIXED, COMP	EA	1
2	11	PADZZ	5905-00-682-4100	RC07GF622J	81349	RESISTOR, FIXED, COMP	EA	3
2	12	PADZZ	5905-00-686-9993	RC07GF124J	81349	RESISTOR, FIXED, COMP	EA	1
2	13	PADZZ	5905-00-185-8521	RC42GF103K	81349	RESISTOR, FIXED, COMP	EA	1
2	14	PADZZ	5905-00-683-2240	RC07GF221J	81349	RESISTOR, FIXED, COMP	EA	2
2	15	PADZZ	5905-00-687-0002	RC07GF223J	81349	RESISTOR, FIXED, COMP	EA	2
2	16	PADZZ	5905-00-279-1976	RC42GF101K	81349	RESISTOR, FI TASK JA	EA	2
2	17	PADZZ	5905-00-683-2242	RC07GF471J	81349	RESISTOR, FIXED, COMP	EA	1
2	18	PADZZ	5905-00-965-9125	RN55D5491F	81349	RESISTOR, FIXED, FILM	EA	1
2	19	PADZZ	5905-00-686-3356	RC07GF823J	81349	RESISTOR, FIXED, COMP	EA	2
2	20	PADZZ	5905-00-686-3798	RC07GF272J	81349	RESISTOR, FIXED, COMP	EA	3
2	21	PADZZ	5905-00-764-8736	RN55D8451F	81349	RESISTOR, FIXED, FILM	EA	1
2	22	PADZZ	5905-00-681-9021	RC07GF824J	81349	RESISTOR, FIXED, COMP	EA	1
2	23	PADZZ	5905-00-965-9052	RN5501002F	81349	RESISTOR, FIXED, FILM	EA	1
2	24	PADZZ	5905-00-681-9969	RC07GF332J	81349	RESISTOR, FIXED, COMP	EA	4
2	25	PADZZ	5905-00-965-9051	RN55D2001F	81349	RESISTOR, FIXED, FILM	EA	1
2	26	PADZZ		E2A502	01121	RESISTOR, VARIABLE, W	EA	1
2	27	PADZZ	5905-00-052-7864	RN55D8252F	81349	RESISTOR, FIXED, FILM	EA	1
2	28	PADZZ	5905-00-681-6462	RC07GF102J	81349	RESISTOR, FIXED, COMP	EA	1
2	29	PADZZ		RT5L104	01121	RESISTOR, VARIABLE, W	EA	2
2	30	PADZZ	5905-00-681-8855	RC07GF394J	81349	RESISTOR, FIXED, COMP	EA	1
2	31	PADZZ	5905-00-762-3603	RN5503832F	81349	RESISTOR, FIXED, FILM	EA	1
2	32	PADZZ		CD40168CN	27014	INTEGRATED CIRCUIT	EA	1
2	33	PADZZ		MR104M20	53673	CAPACITOR, FIXED, PLA	EA	4
2	34	PADZZ	5962-00-568-7413	MN74C74N	27014	MICROCIRCUIT, DIGITA	EA	5
2	35	PADZZ		CD40163BCN	27014	INTEGRATED CIRCUIT	EA	2
2	36	PADZZ	5962-01-010-7807	LM339D	27014	INTEGRATED CIRCUIT	EA	2
2	37	PADZZ	5961-00-842-9864	JAN1N914	81349	SEMICONDUCTOR DEVIC	EA	14

SECTION II (1) ILLUSTRATION		(2)	(3)	(4)	(5)	TM11-6130-413-24P (6)	(7)	(8)
(A) FIG NO	(B) ITEM NO	SMR CODE	NATIONAL STOCK NUMBER	PART NUMBER	FSCM	DESCRIPTION	USABLE ON CODE	U/M INC IN UNIT
2	38	PADZZ	5962-00-568-7361	MN74C00N	27014	MICROCIRCUIT,DIGITA	EA	7
2	39	PADZZ	5962-00-568-7385	MN74C10N	27014	MICROCIRCUIT,DIGITA	EA	2
2	40	PADZZ	5999-01-083-4950	S22	54355	EXTRACTOR,ELECTRICA	EA	2
2	41	PADZZ	5961-00-913-1747	JAN2N2907	81349	TRANSISTOR	EA	8
2	42	PADZZ		CD40498CN	27014	INTEGRATED CIRCUIT	EA	1
2	43	PADZZ		JAN1N4007	81349	SEMICONDUCTOR DEVIC	EA	9
2	44	PADZZ		200635	55364	RELAY,ARMATURE	EA	2
2	45	PADZZ		JAN1N4733A	81349	SEMICONDUCTOR DEVIC	EA	1
2	46	PADZZ		13302243	74868	CONNECTOR ELECTRICA	EA	2
2	47	XDDZZ		MS5195718	96906	SCREW,MACHINE	EA	4
2	48	XDDZZ		MS35338135	96906	WASHER,LOCK	EA	4
2	49	XDDZZ	5310-00-057-0573	NAS620C4	80205	WASHER,FLAT	EA	4
2	50	XDDZZ		MS35649244	96906	NUT,PLAIN,HEXAGON	EA	4
2	51	PADZZ	5962-01-084-6860	UA759UIC	34148	MICROCIRCUIT,LINER	EA	1
2	52	PADZZ		V62	04232	HEAT SINK	EA	1
2	53	XDDZZ		MS5195715	96906	SCREW,MACHINE	EA	3
2	54	XDDZZ		MS35338135	96906	WASHER,LOCK	EA	3
2	55	XDDZZ	5310-00-057-0573	NAS620C4	80205	WASHER,FLAT	EA	3
2	56	XDDZZ		MS35649244	96906	NUT,PLAIN HEXAGON	EA	3
2	57	PADZZ	5910-00-864-8387	5GAD20	56289	CAPACITOR,FIXED,CER	EA	1
2	58	PADZZ		JAN1N5351A	81349	SEMICONDUCTOR DEVIC	EA	1
2	60	PADZZ		UA7912UC	07263	INTEGRATED CIRCUIT	EA	1
2	61	PADZZ		500D257G0550FF7	56289	CAPACITOR,FIXED,ELE	EA	4
2	62	PADZZ		MR224K20	53673	CAPACITOR,FIXED,PLA	EA	4
2	63	PADZZ	5910-00-064-2919	SCZ5U105X0050C5	56289	CAPACITOR,FIXED,CER	EA	3
2	64	PADZZ		JAN2N222	81349	TRANSISTOR	EA	1
2	65	PADZZ	5962-01-038-2925	LN340T12	27014	MICROCIRCUIT,LINER	EA	1
2	66		5962-01-038-2925	TL083CH	33809	INTEGRATED CIRCUIT	EA	1
2	67	PADZZ	5962-01-008-4826	LM124D	27014	INTEGRATED CIRCUIT	EA	1
2	68	PADZZ	5910-00-827-5324	5GAT12	56289	CAPACITOR,FIXED,CER	EA	1
2	69	PADZZ		T3108225M035AS	56289	CAPACITOR,FIXED,PLA	EA	1
2	70	PADZZ	5961-01-030-9552	ST4	03508	SEMICONDUCTOR DEVIC	EA	1

SECTION IV NATIONAL STOCK NUMBER AND PART NUMBER INDEX
 NOTE: LATEST NATIONAL STOCK NUMBER AND PART NUMBER ASSIGNMENTS ARE INCLUDED AT END OF INDEX.

TM11-6130-413-24P

STOCK NUMBER	FIGURE NO	ITEM NO	STOCK NUMBER	FIGURE NO	ITEM NO
5905-00-052-7864	2	27	5905-00-686-3356	2	19
5310-00-057-0573	1	36	5905-00-686-3370	2	3
5310-00-057-0573	1	72	5905-00-686-3798	2	20
5310-00-057-0573	1	107	5905-00-686-9993	2	12
5310-00-057-0573	2	49	5905-00-687-0002	2	15
5310-00-057-0573	2	55	5905-00-691-0195	2	2
5910-00-064-2919	2	63	5905-00-727-8001	2	8
5310-00-069-5291	1	44	5905-00-762-3603	2	31
5310-00-069-5291	1	55	5905-00-764-8736	2	21
5310-00-069-5291	1	67	5310-00-773-7624	1	4
5310-00-069-5291	1	77	5310-00-773-7624	1	94
5310-00-069-5291	1	88	5310-00-773-7624	1	121
5310-00-069-5291	1	99	5310-00-773-7624	1	125
5310-00-069-5291	1	104	5310-00-773-7624	1	131
5310-00-069-5291	1	112	5905-00-786-3721	2	6
5310-00-069-5291	1	145	5910-00-827-5324	2	68
5905-00-185-8521	2	13	5961-00-842-9864	2	37
5940-00-269-2219	1	20	5930-00-844-0136	1	22
5905-00-279-1976	2	16	5910-00-864-8387	2	57
5920-00-280-8342	1	40	5920-00-892-9311	1	39
5920-00-281-0162	1	85	5961-00-913-1747	2	41
5940-00-356-2493	1	21	5905-00-965-9051	2	25
5930-00-430-3218	1	14	5905-00-965-9052	2	23
5961-00-518-7344	1	56	5905-00-965-9125	2	18
5962-00-568-7361	2	38	5310-00-989-0640	1	82
5962-00-568-7385	2	39	5961-00-990-2263	1	139
5962-00-568-7413	2	34	5962-01-008-4826	2	67
5355-00-579-6819	1	9	5962-01-010-7807	2	36
5905-00-681-6462	2	28	5961-01-030-9552	2	70
5905-00-681-8817	2	10	5962-01-038-2925	2	65
5905-00-681-8818	2	4	6625-01-078-1785	1	16
5905-00-681-8855	2	30	6130-01-078-1850	1	117
5905-00-681-8957	2	9	5950-01-078-7929	1	105
5905-00-681-9021	2	22	6625-01-079-3395	1	48
5940-00-681-9930	1	64	5930-01-080-3631	1	29
5905-00-681-9969	2	24	6645-01-080-6052	1	12
5905-00-682-4100	2	11	6645-01-082-4866	1	10
5905-00-683-2238	1	116	5915-01-082-7209	1	110
5905-00-683-2238	2	7	5999-01-083-4950	2	40
5905-00-683-2240	2	14	5935-01-084-1936	1	31
5905-00-683-2242	2	17	5905-01-084-5938	1	27
5905-00-683-7721	2	1	5962-01-084-6860	2	51
5935-00-686-0447	1	24			

PART NUMBER	FSCM	FIG NO	ITEM NO	PART NUMBER	FSCM	FIG NO	ITEM NO
ACC320U30	04009	1	97	MS12141	71785	1	92
AGC1	44038	1	40	MS25182-2	96906	1	24
A7149855P7	03508	1	142	MS35307305	96906	1	106
A7149856P7	41326	1	60	MS35338135	96906	1	37
CD4016BCN	27014	2	32	MS35338135	96906	1	73
CD401638CN	27014	2	35	MS35338135	96906	1	108
CD4049BCN	27014	2	42	MS35338135	96906	2	48
COML	EMPRE	1	103	MS35338135	96906	2	54
COML	EMPRE	1	109	MS35338136	96906	1	5
EQBBQ2B30	02288	1	41	MS35338136	96906	1	95
E2A502	01121	2	26	MS35338136	96906	1	122
FP9555	33097	1	42	MS35338136	96906	1	132
F19B250V100A	81349	1	85	MS35338136	96906	1	135
GE84147	41326	1	80	MS35338136	96906	1	18
HKP	71400	1	39	MS35338136	96906	1	50
JAN1N4007	81349	2	43	MS35338137	96906	1	45
JAN1N4733A	81349	2	45	MS35338137	96906	1	68
JAN1N5351A	81349	2	58	MS35338137	96906	1	78
JAN1N914	81349	2	37	MS35338137	96906	1	89
JAN2N222	81349	2	64	MS35338137	96906	1	100
JAN2N2907	81349	2	41	MS35338137	96906	1	146
LM124D	27014	2	67	MS35338138	96906	1	83
LM339D	27014	2	36	MS35338138	96906	1	113
LM340T12	27014	2	65	MS35338156	96906	1	126
L1430P	81091	1	31	MS35649244	96906	1	38
MJ802	04713	1	56	MS35649244	96906	1	74
MM74C00N	27014	2	38	MS35649244	96906	2	50
MM74C10N	27014	2	39	MS35649244	96906	2	56
MM74C74N	27014	2	34	MS35649264	96906	1	6
MR104M20	53673	2	33	MS35649264	96906	1	59
MR224K20	53673	2	62	MS35649264	96906	1	96
MSA101100A50	99246	1	143	MS35649264	96906	1	127

PART NUMBER	FSCM	FIG NO	ITEM NO	PART NUMBER	FSCM	FIG NO	ITEM NO
MS35649264	96906	1	133	RN55D1002F	81349	2	23
MS35649264	96906	1	19	RN55D2001F	81349	2	25
MS35649264	96906	1	51	RN55D255F	81349	2	5
MS35649284	96906	1	69	RN55D29441F	81349	1	15
MS35649284	96906	1	79	RN55D3832F	81349	2	31
MS35649284	96906	1	90	RN55D5491F	81349	2	18
MS35649284	96906	1	101	RN55D8252F	81349	2	27
MS35649284	96906	1	114	RN55D8451F	81349	2	21
MS35649284	96906	1	147	RN55D9531F	81349	2	6
MS35650304	96906	1	84	RT5L104	01121	2	29
MS5135732	96906	1	49	ST4	03508	2	70
MS5195715	96906	1	35	S22	54355	2	40
MS5195715	96906	2	53	TL083CN	33809	2	66
MS5195718	96906	1	71	T310B225M035AS	56289	1	115
MS5195718	96906	2	47	T310B225M035AS	56289	2	69
MS5195729	96906	1	3	UA759U1C	34148	2	51
MS5195729	96906	1	124	UA7912UC	07263	2	60
MS5195729	96906	1	130	VK100N1 OHM	12697	1	136
MS5195732	96906	1	93	VK160 4 OHMS	12697	1	58
MS5195732	96906	1	17	VK200W 3 OHMS	12697	1	134
MS5195736	96906	1	120	VP25K10 OHMS	12631	1	137
MS5195745	96906	1	43	VP50K 15 OHMS	12697	1	138
MS5195745	96906	1	76	VP50K1.3 OHMS	12697	1	129
MS5195745	96906	1	98	V62	04232	2	52
MS5195745	96906	1	111	1N4007	81349	1	128
MS5195746	96906	1	66	10/4,TYPE SO	81774	1	32
MS5195746	96906	1	87	12141	71785	1	91
MS5195747	96906	1	144	1237	28520	1	26
MS5195868	96906	1	81	13302243	74868	2	46
NAS620C10	80205	1	82	14302201	74868	1	70
NAS620C4	80205	1	36	2L029	EMPRE	1	54
NAS620C4	80205	1	72	2N1912	03508	1	139
NAS620C4	80205	1	107	200112	55364	1	75
NAS620C4	80205	2	49	200323	55364	1	105
NAS620C4	80205	2	55	200340	55364	1	1
NAS620C6	80205	1	4	200341	55364	1	52
NAS620C6	80205	1	94	200342	55364	1	102
NAS620C6	80205	1	121	200343	55364	1	53
NAS620C6	80205	1	125	200345	55364	1	63
NAS620C6	80205	1	131	200346	55364	1	148
NAS620C8	80205	1	44	200394	55364	1	140
NAS620C8	80205	1	55	200402	55364	1	110
NAS620C8	80205	1	67	200403	55364	1	48
NAS620C8	80205	1	77	200404	55364	1	16
NAS620C8	80205	1	88	200405	55364	1	12
NAS620C8	80205	1	99	200406	55364	1	10
NAS620C8	80205	1	104	200407	55364	1	29
NAS620C8	80205	1	112	200408	55364	1	117
NAS620C8	80205	1	145	200410	55364	1	28
NO. 4	81774	1	25	200411	55364	1	30
N401P15C	41326	1	61	200413	55364	1	23
PB126-RED KNOB	31356	1	13	200414	55364	1	34
PT11	31223	1	62	200415	55364	1	2
RC07GF010J	81349	1	65	200416	55364	1	86
RC07GF101J	81349	2	1	200426	55364	1	46
RC07GF102J	81349	2	28	200427	55364	1	27
RC07GF103J	81349	1	116	200635	55364	2	44
RC07GF103J	81349	2	7	200636	55364	1	123
RC07GF105J	81349	2	10	2300	28520	1	118
RC07GF124J	81349	2	12	24978713331504	72619	1	8
RC07GF153J	81349	2	4	24979713332504	72619	1	11
RC07GF202J	81349	2	3	24980713333504	72619	1	7
RC07GF221J	81349	2	14	257-BLACK	83330	1	20
RC07GF223J	81349	2	15	257-RED	83330	1	21
RC07GF272J	81349	2	20	430303	54355	1	141
RC07GF332J	81349	2	24	5C25U105X0050C5	56289	2	63
RC07GF394J	81349	2	30	5GAD20	56289	2	57
RC07GF471J	81349	2	17	5GAT12	56289	2	68
RC07GF474J	81349	2	9	500D257G0550FF7	56289	2	61
RC07GF562J	81349	2	2	53E	71785	1	64
RC07GF622J	81349	2	11	7580K6	27191	1	22
RC07GF681J	81349	2	8	7592K6	27191	1	14
RC07GF823J	81349	2	19	8107775	72971	1	33
RC07GF824J	81349	2	22	8507	28520	1	119
RC42GF101K	81349	2	16	90-5-2	49956	1	9
RC42GF103K	81349	2	13				

LATEST NATIONAL STOCK NUMBER ASSIGNMENT

STOCK NUMBER	FIG. NO.	ITEM NO.
5905-00-733-1381	1	90A

LATEST PART NUMBER ASSIGNMENTS

PART NUMBER	FSCM	FIG. NO.	ITEM NO.
MS5195730	96906	1	57
RN55D3012F	81349	1	90A

By Order of the Secretary of the Army:

E. C. MEYER
General, United States Army
Chief of Staff

Official:

J. C. PENNINGTON
Major General, United States Army
The Adjutant General

DISTRIBUTION :

Active Army:

HISA (Ft Monmouth) (21)
 USAINSCOM (2)
 COE (1)
 TSG (1)
 USAARENBD (1)
 DARCOM (1)
 TRADOC (2)
 OS Maj Comd (4)
 TECOM (2)
 USACC (4)
 MDW (1)
 Armies (2)
 Corps (2)
 Svc Colleges (1)
 USASIGS (5)
 USAADS (2)
 USAFAS (2)
 USAARMS (2)
 USAIS (2)

USAES (2)
 USAICS (3)
 MAAG (1)
 USARMIS (1)
 USAERDAA (1)
 USAERDAW (1)
 Ft Gordon (10)
 Ft Carson (5)
 Ft Gillem (10)
 Fort Richardson (CERCOM Ofc) (2)
 Army Dep (1) except
 SAAD (30)
 TOAD (14)
 SHAD (2)
 USA Dep (1)
 Sig Sec USA Dep (1)
 Units org under fol TOE: (2)
 20-207
 29-610

NG: None

USAR: None

For explanation of abbreviations used, see AR 310-50.

RECOMMENDED CHANGES TO EQUIPMENT TECHNICAL PUBLICATIONS



THEN JOT DOWN THE DOPE ABOUT IT ON THIS FORM. CAREFULLY TEAR IT OUT FOLD IT AND DROP IT IN THE MAIL.

SOMETHING WRONG WITH THIS PUBLICATION?

FROM (PRINT YOUR UNIT'S COMPLETE ADDRESS)
 Commander
 Stateside Army Depot
 ATTN: AMSTA-US
 Stateside, N.J. 07703

DATE SENT
 10 July 1975

PUBLICATION NUMBER: TM 11-5840-340-20P
 PUBLICATION DATE: 23 Jan 78
 PUBLICATION TITLE: Radar Set AN/PRC-76

BE EXACT PIN-POINT WHERE IT IS

PAGE NO	PARA-GRAPH	FIGURE NO	TABLE NO
33			
44		19	
45			

IN THIS SPACE TELL WHAT IS WRONG AND WHAT SHOULD BE DONE ABOUT IT:

For item 2, change the NSN to read: 5835-00-134-9186.
Reason: Accuracy.

Identify the cover on the junction box (item no. 5).
Reason: It is a separate item and is not called out on figure 19.

Add the cover of the junction box as an item in the listing for figure 19.
Reason: Same as above

S A M P L E

PRINTED NAME GRADE OR TITLE AND TELEPHONE NUMBER
 SSG I. M. DeSpirit of 999-1776

SIGN HERE

DO NOT WRITE IN THESE SPACES

RECOMMENDED CHANGES TO EQUIPMENT TECHNICAL PUBLICATIONS



SOMETHING WRONG WITH THIS PUBLICATION?

THEN JOT DOWN THE
DOPE ABOUT IT ON THIS
FORM. CAREFULLY TEAR IT
OUT. FOLD IT AND DROP IT
IN THE MAIL.

FROM (PRINT YOUR UNIT'S COMPLETE ADDRESS)

DATE SENT

PUBLICATION NUMBER

TM 11-7130-413-24P

PUBLICATION DATE

6 Nov 80

PUBLICATION TITLE BATTERY CHARGER-

ANALYZER AN/USM-432

BE EXACT PIN-POINT WHERE IT IS

PAGE NO	PARA- GRAPH	FIGURE NO	TABLE NO
------------	----------------	--------------	-------------

IN THIS SPACE TELL WHAT IS WRONG
AND WHAT SHOULD BE DONE ABOUT IT:

USE GUN. PROTRACTOR

PRINT NAME GRADE OR TITLE AND TELEPHONE NUMBER

SIGN HERE

DA FORM 2028-2

PREVIOUS EDITIONS
ARE OBSOLETE

P.S. IF YOUR UNIT WANTS TO KNOW ABOUT YOUR
RECOMMENDATION MAKE A CARBON COPY OF THIS
AND GIVE IT TO YOUR HEADQUARTERS

FILL IN YOUR
UNIT'S ADDRESS



FOLD BACK

DEPARTMENT OF THE ARMY

OFFICIAL BUSINESS

Commander
US Army Communications and
Electronics Materiel Readiness Command
ATTN: DRSEL-ME-MQ
Fort Monmouth, New Jersey 07703

TEAR ALONG DOTTED LINE

FOLD BACK

THE METRIC SYSTEM AND EQUIVALENTS

WEIGHT MEASURE

1 Centimeter = 10 Millimeters = 0.01 Meters = 0.3937 Inches
 1 Meter = 100 Centimeters = 1000 Millimeters = 39.37 Inches
 1 Kilometer = 1000 Meters = 0.621 Miles

WEIGHTS

1 Gram = 0.001 Kilograms = 1000 Milligrams = 0.035 Ounces
 1 Kilogram = 1000 Grams = 2.2 lb.
 1 Metric Ton = 1000 Kilograms = 1 Megagram = 1.1 Short Tons

LIQUID MEASURE

1 Milliliter = 0.001 Liters = 0.0338 Fluid Ounces
 1 Liter = 1000 Milliliters = 33.82 Fluid Ounces

SQUARE MEASURE

1 Sq. Centimeter = 100 Sq. Millimeters = 0.155 Sq. Inches
 1 Sq. Meter = 10,000 Sq. Centimeters = 10.76 Sq. Feet
 1 Sq. Kilometer = 1,000,000 Sq. Meters = 0.386 Sq. Miles

CUBIC MEASURE

1 Cu. Centimeter = 1000 Cu. Millimeters = 0.06 Cu. Inches
 1 Cu. Meter = 1,000,000 Cu. Centimeters = 35.31 Cu. Feet

TEMPERATURE

$5/9(^{\circ}\text{F} - 32) = ^{\circ}\text{C}$
 212° Fahrenheit is equivalent to 100° Celsius
 90° Fahrenheit is equivalent to 32.2° Celsius
 32° Fahrenheit is equivalent to 0° Celsius
 $9/5^{\circ}\text{C} + 32 = ^{\circ}\text{F}$

APPROXIMATE CONVERSION FACTORS

TO CHANGE	TO	MULTIPLY BY
Inches	Centimeters	2.540
Feet	Meters	0.305
Yards	Meters	0.914
Miles	Kilometers	1.609
Square Inches	Square Centimeters	6.451
Square Feet	Square Meters	0.093
Square Yards	Square Meters	0.836
Square Miles	Square Kilometers	2.590
Acres	Square Hectometers	0.405
Cubic Feet	Cubic Meters	0.028
Cubic Yards	Cubic Meters	0.765
Fluid Ounces	Milliliters	29.573
its	Liters	0.473
arts	Liters	0.946
allons	Liters	3.785
Ounces	Grams	28.349
Pounds	Kilograms	0.454
Short Tons	Metric Tons	0.907
Pound-Feet	Newton-Meters	1.356
Pounds per Square Inch	Kilopascals	6.895
Miles per Gallon	Kilometers per Liter	0.425
Miles per Hour	Kilometers per Hour	1.609

TO CHANGE	TO	MULTIPLY BY
Centimeters	Inches	0.394
Meters	Feet	3.280
Meters	Yards	1.094
Kilometers	Miles	0.621
Square Centimeters	Square Inches	0.155
Square Meters	Square Feet	10.764
Square Meters	Square Yards	1.196
Square Kilometers	Square Miles	0.386
Square Hectometers	Acres	2.471
Cubic Meters	Cubic Feet	35.315
Cubic Meters	Cubic Yards	1.308
Milliliters	Fluid Ounces	0.034
Liters	Pints	2.113
Liters	Quarts	1.057
ers	Gallons	0.264
ms	Ounces	0.035
ograms	Pounds	2.205
Metric Tons	Short Tons	1.102
Newton-Meters	Pounds-Feet	0.738
Kilopascals	Pounds per Square Inch	0.145
ometers per Liter	Miles per Gallon	2.354
ometers per Hour	Miles per Hour	0.621



PIN: 047289-000